

The ideal dispensing system for lean manufacturing, the FX-D combines unparalleled price/performance with “plug and play” configurability in the field.

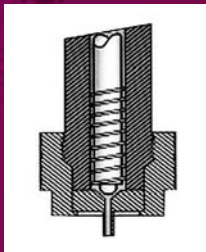


Camalot

FX-D[®] Dispensing System
Flexibility, Performance, Value

Camalot

FX-D



680SD Positive Shut-Off

The Camalot FX-D offers a range of highly accurate closed-loop, servo drive auger, piston and streaming pumps.

Pump maintenance is simplified with quick, easy removal of all wetted parts.

FLEXIBILITY

The Camalot FX-D, from Speedline, is a revolutionary new dispensing system that features a unique “plug and play” system design. Configurable as stand alone or in-line, this new platform provides a lower cost dispenser with mid-to-high end performance. The FX-D employs a combination of industry proven technologies in an easy-to-use, configurable, and reliable dispensing system. Controlled using Benchmark software within the Windows® XP environment facilitates quick, “hassle free” program creation and fast product changeovers.

PUMP TECHNOLOGY

The pumps used on the Camalot FX-D platform are based on proven designs that have been enhanced with closed-loop DC servo motors. These new motors provide finer dispense resolution and adjustable speeds that deliver faster, more precise amounts of material onto your product. Different auger screw pitches are available for applications that have more stringent volume requirements.

PUMP HIGHLIGHTS



635 SD

- Ideally suited for Dot type applications
- Uses footed or unfooted needles
- Precise material delivery
- Minimal maintenance



680 SD

- Ideally suited for Line type applications
- Uses patented no-drip design
- Carbide parts as standard
- High flow rates



SmartStream®

- Non-contact dispense pump is well-suited for underfill applications
- Patent pending design uses a positive displacement technique to create a “Stream” of material
- Closed-loop servo drive ensures fast, repeatable performance
- Narrow stream width for access into densely packed areas
- Innovative design eliminates mechanical ball-to-seat contact, thus reducing wear on parts
- “Hot Swap” changover concept allows cleaning in <2 minutes



Dual Head Synchronous Dispense Modes

- Patented Technology
- Improves throughput >50%
- Fail safe approach that reduces scrapped product

Dispense Matrix

	635SD	680SD	SmartStream	
FEATURES	Non Contact Stream		x	
	Auger Screw	x	x	
	Piston		x	
	Carbide	*x	x	x
	Positive Shut-Off		x	
	Low Level Sensor	x	x	x
	Heat		*x	x
PROCESS	SMT Glue	x		
	Solder Paste	x		
	Silver Epoxy	x		
	Edge/Corner Bond	x	x	x
	Underfill/Encapsulation		x	x
	Dam		x	
	UV Selective Coat			x

* Optional

Power Your Process

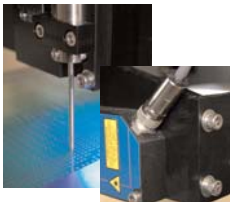
The Camalot FX-D provides flexibility and performance previously found only at the high end of the market, making it an ideal system for manufacturers who demand an accurate, reliable, cost-effective machine that is easily adaptable to changing requirements. Cost effectiveness does not, however, compromise the system's performance. A robust, welded steel frame, closed-loop DC servo motors and precision ball screw drives in all axes ensure reliability and high process yields. Stand-alone or in-line, the FX-D's large dispense area and open architecture provide ultimate flexibility with an easily configurable platform for virtually any dispensing application. Available options include weight scale, needle cleaner, height sensing, heat harness, and second Z-head. All of these, and even a conveyor system, can be retrofitted in the field.

Dual Head Modes

Dual head configurability allows dispensing of different materials within one process. Both Z-axes are independently controlled, facilitating both high positional accuracy and fast axis movement.



With identical pumps and materials configured to both heads, the platform allows 2 new modes of operation. Synchronous mode dispenses simultaneously and reduces dispense time by approximately 50%. Asynchronous mode dispenses alternately with the heads reducing dispense time by up to 20% while maintaining system accuracy.



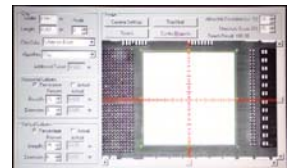
Height Sensing

A laser or mechanical probe (LVDT) is available to sense product height prior to dispensing.



Dual Mode Weight Scale

Patented closed-loop weighing process allows measurement of both global and actual dispense patterns for maximum accuracy. Changes in material viscosity are controlled with automatic compensation.



Auto Vision

Vision system accurately aligns dispense patterns to any fiducials. For underfill, vision pinpoints component edges ensuring a parallel dispense path.

Part Handling

Optional transport system features up to 3 conveyor zones supporting contact or non-contact heat chucks or SMT edge clamps. Unique pipeline mode reduces transfer time up to 50%.

WORLD HEADQUARTERS

16 Forge Park, Franklin, MA 02038
Tel: +1 (508) 520-0083
Fax: +1 (508) 520-2288

www.speedlinetech.com

MANUFACTURING AND CUSTOMER SUPPORT FACILITIES

ACCEL/ELECTROVERT
1629 Old South 5, Camdenton, MO 65020
Tel: +1 (573) 346-3341
Fax: +1 (573) 346-5554

CAMALOT/MPM

16 Forge Park, Franklin, MA 02038
Tel: +1 (508) 520-0083
Fax: +1 (508) 520-2288

SALES AND CUSTOMER SUPPORT OFFICES MEXICO

Carretera Base Aerea #5850
Km. 21 Edificio 11
Zapopan, Jalisco, Mexico
Tel: +52 (33)33-65-6511
Fax: +52 (33) 38-18-9019

EUROPE

Speedline Technologies GmbH
Im Gefierth 14
D-63303 Dreieich, Germany
Tel: +49 (0) 6103-8320
Fax: +49 (0) 6103-832-299

ASIA/PACIFIC

Speedline Technologies Asia Pte Ltd
132 Joo Seng Road
#03-01 Uniplus Building
Singapore 368358
Tel: +65-6286 6635
Fax: +65-6289 9411

© 2011 Speedline Technologies

Speedline, Camalot, FX-D, and SmartStream are trademarks of Speedline Technologies or its subsidiaries and affiliated companies. Windows is a registered trademark of Microsoft Corporation. All other brands may be trademarks of their respective holders.

04/11

CAMALOT FX-D SPECIFICATIONS

SMT Applications	SMA, solder paste, conductive adhesives
------------------	---

Semiconductor Packaging	Underfill, encapsulant, thermal grease, lid seal, die attach
-------------------------	--

XY AXIS

XY Placement Accuracy*	+/-50 microns @ 3 sigma
------------------------	-------------------------

Repeatability*	+/-15microns @ 3 sigma
----------------	------------------------

Speed	500 mm/sec (19.7"/sec)
-------	------------------------

Encoder Resolution	2 microns
--------------------	-----------

Gantry Drive System	Closed-loop DC servo, ballscrew drive
---------------------	---------------------------------------

Z AXIS

Z Axis Accuracy*	+/-25 microns (0.001") @ 3 sigma
------------------	----------------------------------

Repeatability*	+/-10microns @ 3 sigma
----------------	------------------------

Speed	188 mm/sec (7.38"/sec)
-------	------------------------

Encoder Resolution	0.3 microns
--------------------	-------------

Z-Axis Type	Closed-loop DC servo, Ballscrew drive
-------------	---------------------------------------

Z-Sense Type	Mechanical probe or CCD laser
--------------	-------------------------------

DOT PLACEMENT PERFORMANCE

3.00mm pitch**	30,000 DPH
----------------	------------

1.27mm pitch**	36,000 DPH
----------------	------------

IPC 9850 test PCB**	23,000 DPH
---------------------	------------

TRAVEL

Max Dispense Area (XY)***	508 mm x 508 mm (20" x 20")
---------------------------	-----------------------------

Z-Axis Travel	100 mm (4")
---------------	-------------

BOARD HANDLING

Conveyor Type	Flat belt with auto width adjust
---------------	----------------------------------

Min Conveyor Width	25.4 mm (1.0")
--------------------	----------------

Above Board Clearance	25.4 mm (1.0")
-----------------------	----------------

Underboard Clearance	30.5 mm (1.2")
----------------------	----------------

Transport Height	790 mm to 965 mm (32.1" to 38")
------------------	---------------------------------

Protocol	SMEMA
----------	-------

Conveyor Options SMT	SMT edge clamps w/vacuum support
----------------------	----------------------------------

Conveyor Lift Chucks	Up to three 13" x 10" chucks
----------------------	------------------------------

Conveyor Weight Capacity***	3.66 kg total (8.1 lbs.) w/ 3 lift chucks
-----------------------------	---

Lift Chuck Options	Heated contact w/vacuum or non-contact (convection)
--------------------	---

Chuck Temperature Range	Ambient to 130°C
-------------------------	------------------

DISPENSE METHOD

Pump Temperature Range	Ambient to 70°C
------------------------	-----------------

Pump Control	Closed-loop dc servo axis
--------------	---------------------------

SmartStream	Non-contact and low level sensor included
-------------	---

DC Servo Pumps

	Rotary positive displacement pumps for dot or line applications with low level sensor included
--	--

STANDARD FEATURES

Auto-Width Conveyor	XYZ calibration station
---------------------	-------------------------

Pre-dispense Station	Purge station
----------------------	---------------

Flip Chip Calculator	Auto-vision alignment
----------------------	-----------------------

Vision System	Split beam on-axis illumination — red or blue light
---------------	---

Computer	Internally mounted desktop
----------	----------------------------

Operating System	Microsoft Windows XP
------------------	----------------------

Program Storage	Local hard drive, CD-RW, Ethernet and USB ports
-----------------	---

Program Method	Teach camera, off-line programming, or text file download
----------------	---

Pipeline conveyor	Parallel product transfer
-------------------	---------------------------

FACILITIES

Power Requirements	208 to 240 VAC, 50/60 Hz 20A
--------------------	------------------------------

Air Supply Requirements	10 CFM (4.7l/s) at >80 PSI (5.5 bar) filtered @ 5 microns
-------------------------	---

Machine Footprint (W x D x H)	1270 mm x 1475 mm x 1730 mm (50" x 58" x 68")
-------------------------------	---

Machine Weight	680 kg (1500 lbs.)
----------------	--------------------

Crated Weight	890 kg (1962 lbs.)
---------------	--------------------

Crated Dimensions (W x D x H)	1752 mm x 2133 mm x 2032 mm (69" x 84" x 80")
-------------------------------	---

Industry Standards	CE, SMEMA, SEMI S2 & S8
--------------------	-------------------------

OPTIONS

Dual Mode Weight Scale	Die edge detection algorithms
------------------------	-------------------------------

Needle Cleaner	Needle Detector
----------------	-----------------

Time Pressure Dispensing	Secondary Z Axis
--------------------------	------------------

Prewire for Heat	
------------------	--

Synchronous Dual Head	
-----------------------	--

*At Full Speed

**0.5mm dot diameter 2.5mm needle lift

***Consult factory for specifics.

Electronic data sheet available on request.

Specifications are subject to change without notice.

ABOUT SPEEDLINE TECHNOLOGIES

Speedline Technologies is the global leader in process knowledge and expertise for the PCB assembly and semiconductor industries. Based in Franklin, Massachusetts, U.S.A., the company markets five best-in-class brands — Accel microelectronics cleaning equipment; Camalot dispensing systems; Electrovert wave soldering, reflow soldering, and cleaning equipment; MPM stencil and screen printing systems; and PROTECT global services, support, and training solutions. For more information, visit us at www.speedlinetech.com.

Speedline Technologies maintains an ongoing program of product improvement that may affect design and/or price. We reserve the right to make these changes without prior notice or liability.



Knowledge in process